

SIGNWAVE™ 1 (INDOOR/OUTDOOR)

SW1-SERIES | FLEXIBLE LIGHTING SYSTEM

Fixture Type: _____

Project: _____

Location: _____



| MODEL: | SW1-35K-24V | SW1-RED-24V | SW1-GRN-24V | SW1-BLU-24V | SW1-YLW-24V |
|--------|---------------|-------------|-------------|-------------|-------------|
| Kelvin | WHITE (3500K) | RED | GREEN | BLUE | YELLOW |
| Lumens | 138 lm/ft | 72 lm/ft | 96 lm/ft | 45 lm/ft | 98 lm/ft |
| Rating | IP65 | IP65 | IP65 | IP65 | IP65 |

PRODUCT FEATURES

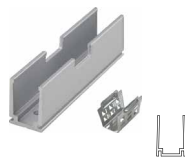
- 50ft per power feed
- Dimmable
- 50,000 hour life
- UL-listed for indoor and outdoor use
- Factory-installed power feed and end caps
- For use with 24V power supplies

ACCESSORIES

SW1-CH-1M
(1-meter aluminum mounting channel)



SW1-CLP
(2-inch aluminum mounting clip)



SW1-FML*
(Signwave-specific Factory Made Lead)

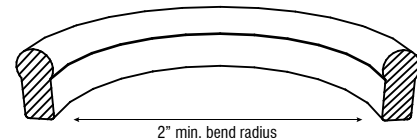
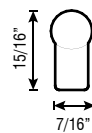


* FML required. 72" standard length (or specify custom length)

SPECIFICATIONS

| | |
|-----------------|---------------------------------|
| Series | SW1 - Signwave™ 1 |
| Input Voltage | 24V DC / Constant Voltage |
| Power | 1.5 W/ft |
| Max Run Length | Unlimited, power every 50ft |
| Cut Intervals | 2in (5cm) |
| Dimensions | 15/16" (24mm) x 7/16" (11mm) |
| IP Rating | IP65 |
| Diode | Epistar |
| Dimming Options | PWM, Triac, 0-10V, DMX, Hi-lume |
| Temp Range | -40°F (-40°C) to 149°F (65°C) |

DIMENSIONS & APPLICATION



Conforms to ANSI/UL Standard 2108
Certified to CAN/CSA Standard C22.2 No. 250.0

